



2 Bridgewater Avenue, Fulham
London SW6

[GARTON JONES.COM](https://www.gartonjones.com)



2 Bridgewater Avenue, Fulham
London, SW6

GARTON JONES.COM

11 Park Street
Chelsea Creek
London
SW6 2FS

Sales +44 (0) 20 7824 7090
paul@gartonjones.com
www.gartonjones.com

£700 Per Week

Offering great views from the 21st Floor is this stunning one-bedroom apartment 576sqft (53.5sqm) which forms part of the landmark building The Kings Tower - Chelsea Creek. The accommodation is finished to an exceptional standard and boasts an elegant style which you would associate with modern apartments built by Berkeley St George. The layout comprises of entrance hall, open plan living & kitchen, offering contemporary shaker style wall and base units with built in Miele Appliances & Composite stone worktop and splashback, access to the Balcony. Double bedroom & a family bathroom. The Kings tower residence will have access to the Halcyon Club which will offer a 31st floor sky lounge and terrace with enviable panoramic views, two residents cinemas, business lounge & private meeting rooms, 24-hour concierge and a fitness centre offering an indoor pool, sauna & steam room as well as a gymnasium. Chelsea Creek is a unique dockside development within easy reach of Imperial wharf over ground station as well as the stylish King's Road and Chelsea Harbour, with its many restaurants, bars and boutiques.

Deposit 5 Weeks
12-Month Tenancy
Council Tax — Hammersmith & Fulham — Band E

EPC B (84)

EPC certificate available on request.

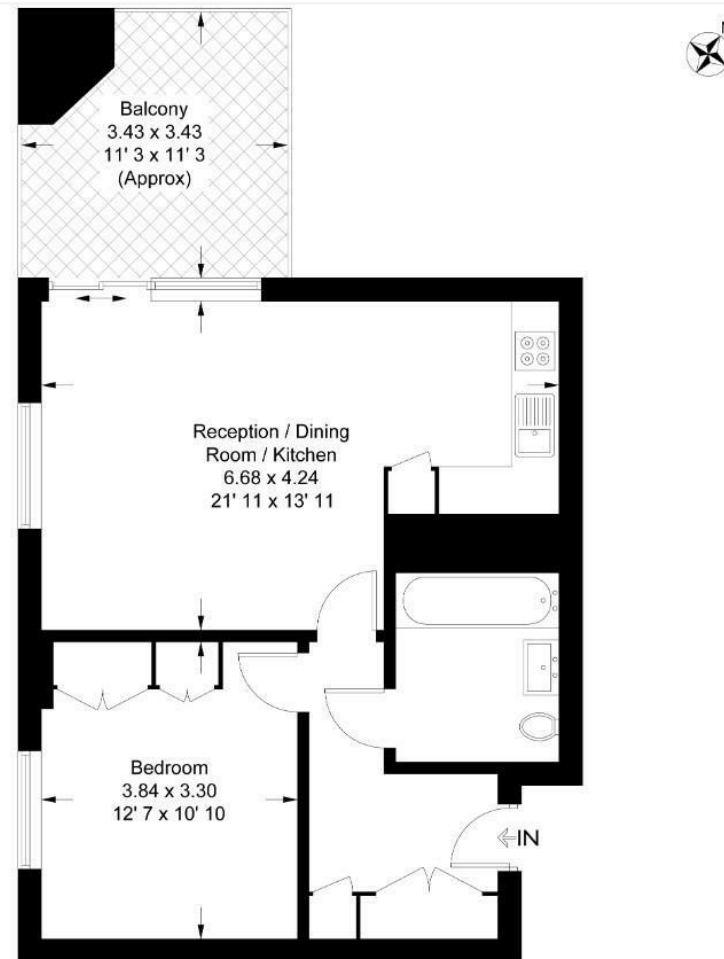
- One Bedroom Stunning Apartment
- 21st Floor with Great Views
- Furnished
- High Specification
- 576sqft / 53sqm
- Two Residents Cinemas & 32Nd Floor Roof Terrace & Lounge
- 24 Hour Concierge
- Onsite Brand-New Gym Now Open
- Close to Imperial Wharf Station
- EPC B (84)



Kings Tower

Approximate Gross Internal Area = 576 sq ft / 53.5 sq m
Balcony = 127 sq ft / 11.8 sq m

GARTON JONES
LONDON



Twenty First Floor

This plan is not to scale and must be used as layout guidance only. All measurements and areas are approximate and should not be relied upon to provide accurate information. This plan must not be relied upon when making property valuations, design considerations or any other such relevant decisions. We accept no responsibility or liability (whether in contract, tort or otherwise) in relation to any loss whatsoever arising from or in connection with any use of this plan or the adequacy, accuracy or completeness of it or any information within it.



